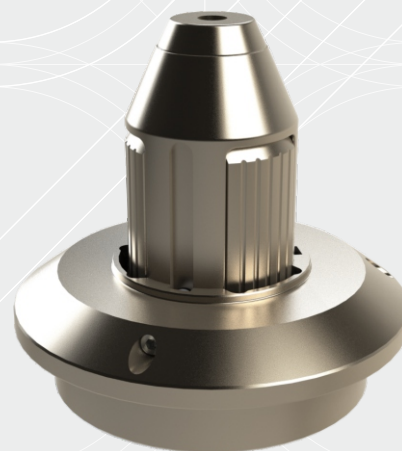




# Rotogrip

## ROTATION CORE CHUCKS WITH EJECTION FLANGE



- ✓ No damage of the reel core
- ✓ Sturdy, flexible and reliable
- ✓ Safety
- ✓ Easy installation
- ✓ Perfect grip on the reel core
- ✓ Perfect control of the reel
- ✓ No maintenance
- ✓ Fixing flange on customer's request
- ✓ For cores of 3", ø100 and 4"

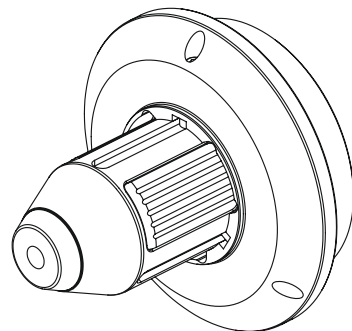
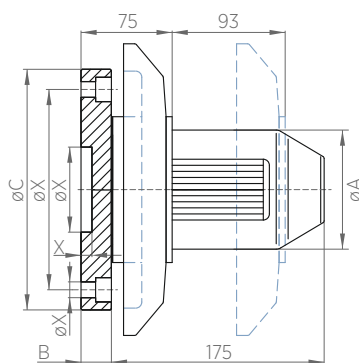
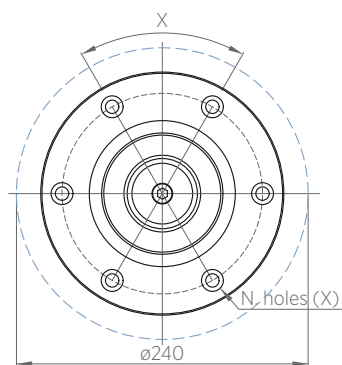
Rotogrip rotation core chucks use the torque produced by the braking force and the opposite web tension (coupled with a brake or motor) to expand the sector elements in order to block and centre automatically the reel core.

The sector elements, with a wide contact surface, ensure maximum control of the reel and reduce damages to the cardboard cores, which can be therefore used again.

Flexibility is another important characteristic of Rotogrip chucks: depending on the application, the fixing flange can be made on customer's request, are available different dimensions and for cores of 3", ø100 and 4".

The version with ejection flange for pneumatic pistons, guarantees reliability and safety for the operator as the reel core is ejected without any problem.

For these characteristics of sturdiness, flexibility, long life span and ease of installation, Rotogrip core chucks are widely used with reels of big size and weight such as in corrugated cardboard production industry.



## TECHNICAL DATA

| Inside core diameter      | 3" S                  | ø100  | 4" S  |
|---------------------------|-----------------------|-------|-------|
| A - mm                    | 74,5                  | 99    | 101   |
| B - mm                    | 20                    | 30    | 30    |
| C - mm                    | 198                   | 198   | 198   |
| X - mm                    | on customer's request |       |       |
| Max expansion - mm        | 85,5                  | 109   | 110   |
| Max load - N              | 18000                 | 45000 | 45000 |
| Transmissible torque - Nm | 1500                  | 2500  | 2500  |

\*Data are subject to technical change without notice

\*\*All data have to be considered for single chuck