



# TM

## AXIAL THRUST MECHANICAL CORE CHUCKS



- ✓ Best quality to price ratio
- ✓ Sturdy, flexible and reliable
- ✓ Easy installation
- ✓ Perfect grip on the reel core
- ✓ Perfect control of the reel
- ✓ No maintenance
- ✓ Fixing flange on customer's request
- ✓ For cores from 3" to 12"

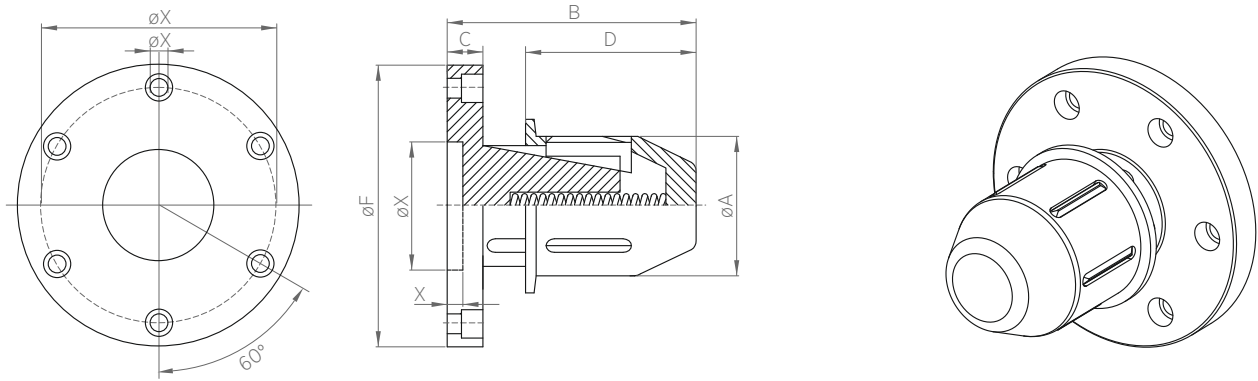
TM axial thrust mechanical core chucks are provided with a spring system which, using the axial thrust when introduced inside the reel core, expand a series of keys that guarantee the right grip of the reel.

The sector elements, with a wide contact surface, ensure maximum control of the reel.

Flexibility is an important characteristic of TM chucks: depending on the application, the fixing flange can be made on customer's request, are available different dimensions, with mono (TM/A) or double diameter (TM/B) and for cores from 3" to 12". Moreover, TM core chucks can be provided with central bore for centering of the reel with photoelectric sensor or with ejection flange.

For these characteristics of sturdiness, flexibility, long life span and ease of installation, TM core chucks provide the best quality to price ratio and are widely used with reels of big size and weight such as in corrugated cardboard production industry.

## TM/A mono diameter



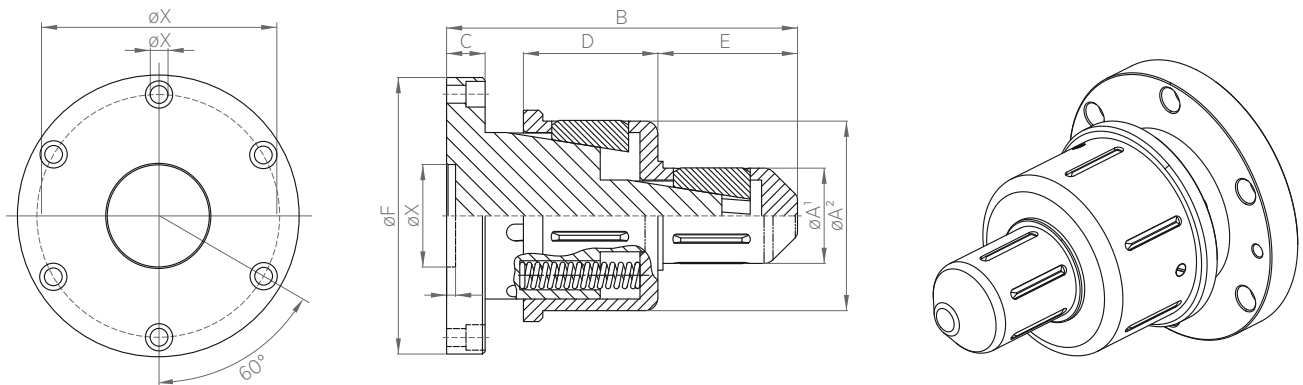
### TECHNICAL DATA

Inside core diameter	3"	4"	5"	6"	12"
A - mm	74,5	98	125	148	301
B - mm	175	175	165	165	165
C - mm	25	25	30	30	30
D - mm	120	120	105	105	105
F - mm	168	195	195	216	415
X - mm	on customer's request				
Max load - N	12000	27000	50000	75000	150000
Transmissible torque - Nm	250	1100	2500	3000	18000

\*Data are subject to technical change without notice

\*\*All data have to be considered for single chuck

## TM/B double diameter



### TECHNICAL DATA

Inside core diameter	3"/4"	3"/6"	4"/6"
A <sup>1</sup> /A <sup>2</sup> - mm	74,5/98	74,5/148	98/148
B - mm	238	274	268
C - mm	25	30	30
D - mm	85	105	104
E - mm	98	109	104
F - mm	195	216	216
X - mm	on customer's request		
Max load - N	7500/25000	15000/75000	27000/75000
Transmissible torque - Nm	250/1100	250/3000	1100/3000

\*Data are subject to technical change without notice

\*\*All data have to be considered for single chuck



Re S.p.A.  
via Firenze 3  
20060 Bussero (MI) Italy

T +39 02 9524301  
F +39 02 95038986  
E [info@re-spa.com](mailto:info@re-spa.com)

Assistenza tecnica  
Technical support  
T +39 02 952430.300  
E [support@re-spa.com](mailto:support@re-spa.com)

Assistenza commerciale  
Sales support  
T +39 02 952430.200  
E [sales@re-spa.com](mailto:sales@re-spa.com)